

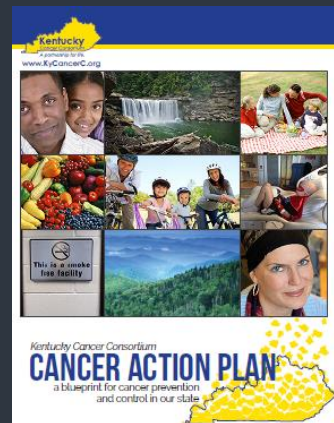
Kentucky Radon Fact Sheet

KENTUCKY RADON PROGRAM

<https://chfs.ky.gov/agencies/dph/dphps/emb/Pages/radon.aspx>

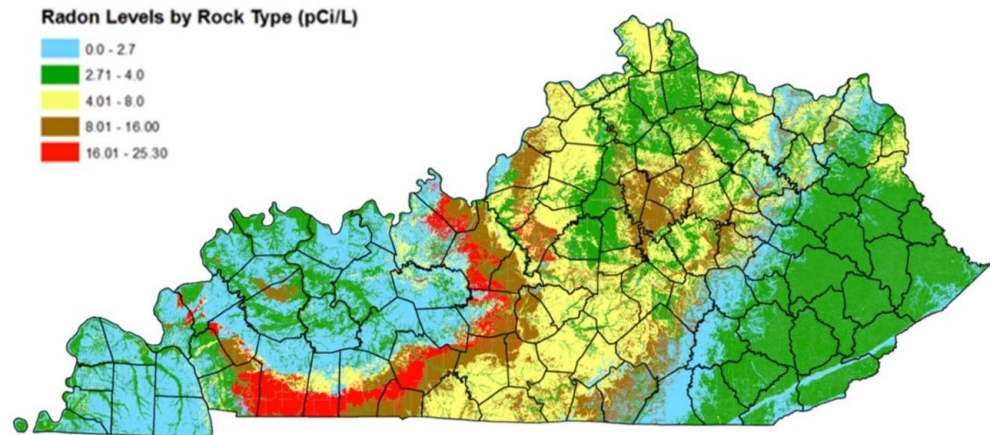
Contact: Clay Hardwick
(502) 564-4856
Clay.hardwick@ky.gov

KDPH Street Address
Cabinet for Health and
Family Services
Department for Public
Health
Environmental
Management Branch
275 E Main St, HS1-
CD Frankfort, KY
40621



https://www.kycancer.org/wp-content/uploads/sites/14/2019/08/KCC%20Action%20Plan%202019_revised_July26_2019.pdf

Radon Exposure in Kentucky, 1986-2015



Source of map: UK College of Nursing: <https://breathe.uky.edu/radon/radon-data-county-and-statewide>

The Kentucky Radon Program is within the Kentucky Department of Public Health (KDPH), Public Health Protection and Safety Division. The program is funded by the Environmental Protection Agency (EPA) State Indoor Radon Grant (SIRG). The KDPH must provide cash and/or in kind match of 40% or greater on the funds received for the EPA SIRG. The program conducts outreach and education activities to health professionals, builders, realtors, contractors, public health officials and other entities and provides sub-grants to local entities to conduct similar activities and other special projects. The radon program work closely alongside other health related programs, including the Environmental Public Health Tracking Network, the Behavioral Risk Factor Surveillance System and the Kentucky Cancer Consortium.

Radon Awareness, Education, Testing and Mitigation

- A radon coalition operates in Kentucky and gives support to a strategic plan for radon reduction. The plan focuses on Education to Medical Professionals, the Kentucky Cancer Consortium Cancer Action Plan, Radon Policy & Education in Schools, Continuing Education, and Radon Code Adoption for Builders
- Radon education courses for radon industry, realtors, builders, and health officials is scheduled annually
- Thirteen Health Departments & Districts covering 45 counties are actively supporting radon education through test kit distribution, education projects, and advertising media
- Radon coalition effort through the Kentucky Cancer Consortium has priority focus on Healthcare Professionals and reaching local residents with education by improving the means by which educational material is obtained

Pending/Enacted Legislation

House Bill 420 bill sponsored by Representative Adam Bowling was introduced in the 2019 legislative session. The bill was to amend KRS 211.9101, 211.9103, 211.9105, 211.9107, 211.9109, 211.9111, 211.9113, 211.9115, 211.9119, 211.9121, 211.9125, 211.9129, 211.9131, and 211.9135 to update requirements for radon certifications; repeal KRS 211.9117, 211.9123, and 211.9127.

Summary: Amendments to existing Kentucky statutes (KRS 211.9101 thru 211.9135) were put forth. A transition will occur. It will not be “licensure” for radon contractors but will be a “registration” of contractors with a State Office. There is no formal licensure process. The American National Standards Institute (ANSI) will be what is recognized as the applicable standards in Kentucky.

Key areas that will be changed as a result of amendments once they become effective are: 1) Biennial registration would replace annual registration; 2) The cost would be to the government agency for management of contractor registration instead of receiving a \$250 certification fee as it was originally planned; 3) There would be a difference in the disclosure of the residential information associated with radon contractor work and data collection. The detail of the radon data connected with radon contractor work would not disclose any homeowner identifier information beyond a zip code.

The amended statutes did pass in the session and were signed into law by Governor Matt Bevin.

Other Information

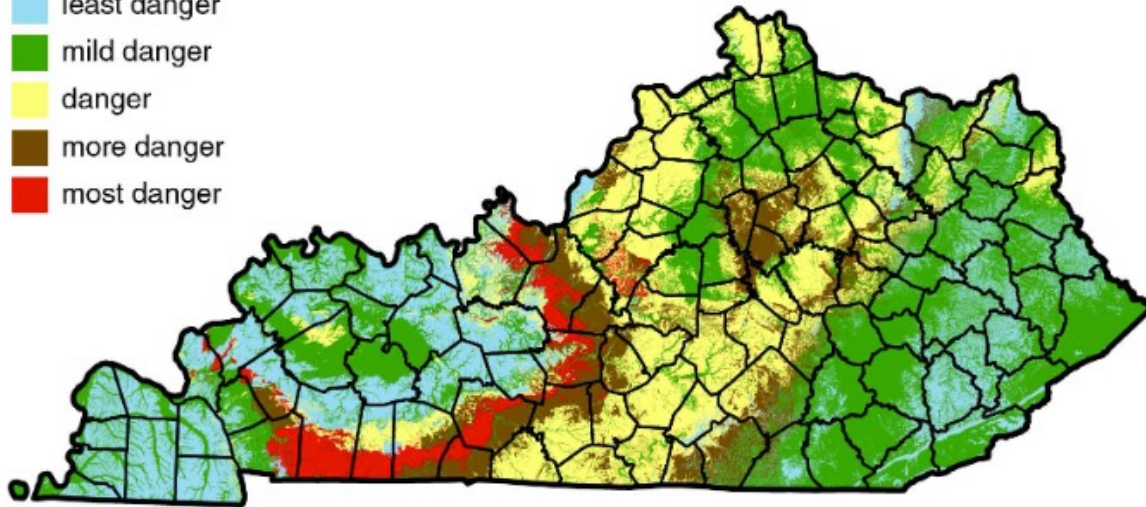
Starting on the following page is the "Kentucky Radon Fact Sheet" produced by State of Kentucky's Radon Program, as provided to the National Radon Program Services at Kansas State University on April 3, 2023. Uploaded to <https://sosradon.org> on April 24, 2023.

Kentucky Radon Fact Sheet

Certain types of rock have higher levels of radon:

Radon is a problem in many areas in Kentucky.

-  least danger
-  mild danger
-  danger
-  more danger
-  most danger



**Different colors show different rock types. High radon can occur even in a least or mild danger area.*

Radon Program Contact: Clay Hardwick

Kentucky Radon Grant Program

275 East Main Street
Frankfort, KY 40621

Phone: 502-564-4856

Email: Clay.Hardwick@ky.gov

Website:

<https://chfs.ky.gov/agencies/dph/dphps/emb/Pages/radon.aspx>

Source of map: UK College of Nursing:

<https://breathe.uky.edu/radon/radon-data-county-and-statewide>

Radon Facts

- The Kentucky Radon Program provides radon test kits free of charge to Kentucky residents through grant funding from the EPA State Indoor Radon Grant.

Kentucky Radon Fact Sheet

Kentucky Cancer Consortium Cancer Control Plan (2020)

Goal 3: Prevention

Reduce the incidence and mortality rate of cancers related to environmental carcinogens, with a focus on radon.

Objectives

- By 2018, develop a baseline measure of the percentage of buildings and homes that are tested for radon in Kentucky.
- By 2018, develop a baseline measure of the percentage of buildings and homes with radon levels exceeding the U.S. EPA action guideline of 4 pCi/L.
- By 2018, develop a baseline measure of newly built buildings and homes with radon-resistant new construction (RRNC) features.

Policy, Systems, and Environmental Changes

- Encourage agencies and organizations to report radon testing and mitigation every five years to the state radon program.
- Encourage agencies and organizations to report the number of Radon Resistant New Constructions (RRNC).
- Promote efforts to incentivize radon mitigation retrofitting of existing buildings.
- Encourage building code changes/enforcement to require radon reduction venting in new construction.
- Collaborate with real estate firms to test for radon early in the selling process.
- Identify gaps and barriers related to radon policies and advocate for addressing those gaps and barriers.
- Disseminate education around evidence-based policies, systems and environmental changes for workers and communities exposed to radon.
- Share data regarding certified radon mitigators, measurement specialists and certified labs.

Health Equality

- Promote efforts to reduce the burden of costs associated with radon mitigation for the low-income population.
- Partner with nonprofit agencies constructing residential, multi-family, schools and large buildings to encourage use of radon resistant construction materials.
- Ensure that educational radon materials are culturally and linguistically appropriate.

Communication / Education

- Support the Kentucky Radon Program in their efforts to increase public awareness of the potential dangers of high radon levels in homes and workplaces.
- Promote development of educational materials directed towards home builders, home inspectors and realtors.
- Encourage Kentuckians to test their home for radon through short-term kits available through the Kentucky Radon Program.
- Promote notification and disclosure of radon information as part of the property transfer process.
- Educate the public on the risks of high radon levels and the benefits of mitigation and the EPA recommended action levels.
- Educate the public on low cost mitigation assistance/opportunities.
- Ensure that educational radon materials are culturally and linguistically appropriate.
- Identify advocacy channels to promote radon education, awareness and prevention.
- Encourage development and dissemination of information regarding radon policies and education to radon professionals.
- Encourage home builders and realtors to educate clients regarding radon mitigation and RRNC.

Kentucky Radon Fact Sheet

Kentucky Cancer Consortium Cancer Control Plan (2020) continued

Healthcare Professionals

- Educate healthcare providers about radon-induced cancer risk and the link between radon and tobacco smoke in increasing the risk of lung cancer.
- Encourage discussions between healthcare providers and patients on the risks of radon and the importance of testing and mitigation.
- Promote radon continuing education opportunities.
- Encourage the use of the “Prescription for Radon” toolkit.*

Worksite Wellness

- Encourage the state Board of Education to use radon resistant new construction in new schools.
- Promote efforts to require schools, daycare centers and workplaces to test for radon every five years.
- Encourage schools, daycare centers and workplaces with high levels of radon to mitigate.
- Encourage Human Resources to offer radon testing as part of their worksite wellness programs.

Insurers

- Promote the inclusion of radon testing and mitigation coverage through property and casualty insurance companies.
- Encourage healthcare insurers to promote radon testing and mitigation through healthcare networks.
- Promote radon testing and mitigation as a component of health benefits and health savings accounts.

Data and Research

- Collect and analyze radon testing and mitigation data every five years.
- Collect and analyze data on the number of RRNC.
- Collect and analyze data on the number of homes and buildings mitigated with levels above 4pCi/L.
- Encourage lung cancer patients and their families to test their homes for radon.
- Promote research focused on reducing barriers associated with radon mitigation costs (ie. tax credits, low costs loans, etc.).
- Promote continued research between the synergistic effect of radon, tobacco use and secondhand smoke.